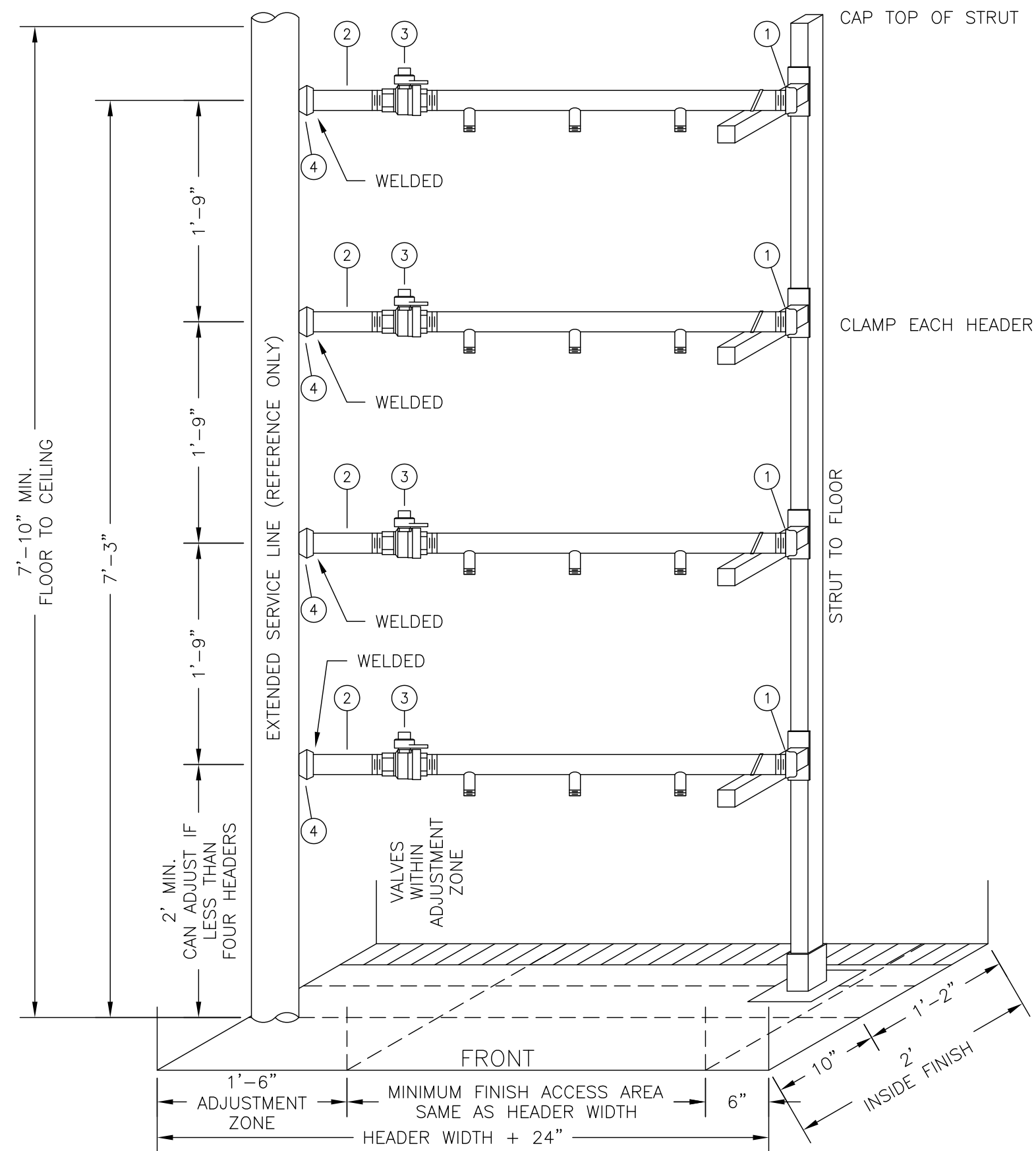


PLAN



ELEVATION

BILL OF MATERIAL

NO.	QTY.	STOCK NO.	SIZE	DESCRIPTION
1	4	100192	1-1/2"	CAP, scd iron
2	4	100390	1-1/2" x 9"	NIPPLE, scd std wall ZP ASTM A733 (cut off threads, one end)
3	4	101116	1-1/2"	VALVE, ball scd Jomar Fig. 175LWN
4	4	NS	1-1/2"	SOCKOLET, 3000# FS

NUMBER OF METERS	STOCK NUMBER	HEADER WIDTH	FINISH OF ENCLOSURE WIDTH x DEPTH
2	104965	2'-0"	4'-0" x 2'-0"
3	104966	2'-10"	4'-10" x 2'-0"
4	104967	3'-8"	5'-8" x 2'-0"
5	NS	4'-6"	6'-6" x 2'-0"
6	104968	5'-4"	7'-4" x 2'-0"
7	NS	6'-2"	8'-2" x 2'-0"
8	104969	7'-0"	9'-0" x 2'-0"

NOTE: COMBINATIONS OF HEADERS CAN BE FABRICATED  
- E.G., 2+8 FOR 10 DROPS

MINIMUM DOOR OPENING/ACCESS SAME AS HEADER WIDTH

FINISHED ENCLOSURE AREA = (ADJUSTMENT ZONE + HEADER WIDTH + 6") x 2'

NOTES:

- ALL DIMENSIONS ARE "FINISH."
- ENCLOSURE DIMENSIONAL VARIANCES REQUIRE NW NATURAL APPROVAL.
- LATERAL WELDS FOR HEADER BRANCH POSITIONING TO BE COMPLETED BY NW NATURAL CONTRACTOR.
- SIZES AND SPACING FOR LATERAL BRANCHES TO BE DICTATED BY NW NATURAL.
- CENTERLINE OF EXTENDED BUILDING SERVICE IDEALLY SAME AS HEADER CENTERLINE.
- LATERAL BRANCH SHUT-OFF POSITIONING JUST INSIDE ADJUSTMENT ZONE.
- METER AND METER VALVE ACCESS MINIMUM SHALL BE NO LESS THAN HEADER WIDTH.
- METER CLOSET ENCLOSURE SHALL NOT BE UTILIZED FOR ANY TYPE OF STORAGE.
- 24/7 METER AND VALVE ACCESS ARRANGEMENTS ARE REQUIRED.
- 3/4" POINT OF DELIVERY LOAD POTENTIAL: 600 CFH (2 PSIG DELIVERY).
- HOUSELINE SHALL TERMINATE WITHIN REAR 4" OF ENCLOSURE WITH ELBOW DOWNWARD. (SEE SHADED AREA IN TOP VIEW.)
- CSST MAY BE CONSIDERED/UTILIZED TO MAKE CONNECTIONS BETWEEN HOUSELINE PIPING AND METER OUTLETS.
- STACKED HEADERS WILL BE SYMMETRICAL.

REV	DR.	APP.	REVISION	DATE



DOMESTIC METER CLOSET  
ELSTER BK-250 METER WITH 2" DROPS  
2 PSIG DELIVERY

BAR IS ONE INCH ON ORIGINAL DRAWING.

ADJUST SCALE AS SHOWN ACCORDINGLY.

DWG. NO. **D-05-77-C**

DR. B3H APP. DATE 6/9/17

SCALE 1" = 1' 0"

APP BY. AMF - INITIAL REL.